

ZEST
by **zepter**

EN
**AUTOMATIC
COFFEE MACHINE**

CMA-01

Instruction manual



www.zestbyzepter.com



Thank you for choosing
the **ZEST by ZEPER** automatic coffee machine.

Meticulously engineered for convenience, efficiency, and safety, it is designed to deliver your perfect cup of coffee, day after day. To ensure optimal performance and longevity, please read this manual thoroughly before first use.

We recommend keeping it on hand for future reference.
We wish you many years of exceptional coffee enjoyment.



Scan the QR code
to access to
another languages

CONTENT

01	SAFETY INSTRUCTIONS	1
02	KNOW YOUR AUTOMATIC COFFEE MACHINE	4
03	BEFORE FIRST USE	6
	3.1 UNPACKING THE APPLIANCE	
	3.2 CLEANING BEFORE USE	
	3.3 COFFEE MACHINE INSTALLATION	
	3.4 MODE SELECTION	
	3.5 FILLING WATER TANK	
	3.6 FILLING COFFEE BEAN CONTAINER	
04	INSTRUCTIONS FOR USE	10
	4.1 PREPARING YOUR COFFEE	
	4.2 ASSEMBLING THE AUTOMATIC MILK FROTH SYSTEM	
	4.3 PREPARING LATTE MACCHIATO OR CAPPUCCINO	
	4.4 FROTHING MILK	
	4.5 ADJUSTING THE QUANTITY OF YOUR COFFEE	
	4.6 COFFEE BEAN GRINDING ADJUSTMENT	
05	CLEANING AND MAINTENANCE	14
	5.1 QUICK CLEAN	
	5.2 CLEANING DRIP TRAY AND COFFEE GROUNDS WASTE CONTAINER	
	5.3 CLEANING BREWING UNIT	
	5.4 CLEANING WATER TANK	
	5.5 CLEANING THE AUTOMATIC MILK FROTH SYSTEM	
	5.6 CLEANING THE MILK CONTAINER ELEMENTS	
	5.7 DESCALING	
	5.8 CLEANING OUTSIDE OF THE COFFEE MACHINE	
	5.9 CLEANING COFFEE POWDER OUTLET	

06 TROUBLESHOOTING	21
07 PRODUCT COMPLIANCE AND DISPOSAL INFORMATION	23
08 CONTACT ZEPTER	23
09 WARRANTY STATEMENT	24
10 WARRANTY CARD	25

01 SAFETY INSTRUCTIONS

The safety precautions and the instruction manual are part of the appliance. Read them carefully before using your new appliance for the first time. Keep them in a place where you can find and refer to them later on.

- The appliance must only be used as described in these instructions.
- The manufacturer is not liable for damages arising from any use contrary to the intended purpose.
- Keep these instructions for future reference.
- If you pass the appliance on to someone else, please include these instructions.
- Check the mains voltage stated on the rating plate corresponds to the local electricity supply



WARNING!

Children shall not play with the appliance.



WARNING!

Keep small parts away from children.



WARNING!

Keep packaging material away from children.



WARNING!

Cleaning and user maintenance must not be performed by children.



WARNING!

Always put the main appliance on a flat, dry and clean surface.



WARNING!

Do not allow children to touch the appliance or the power cord during the operation.



WARNING!

Misuse of the appliance can cause injury!



WARNING!

Do not use an extension power cord set unless competent authority has approved it.

**WARNING!**

Do not leave the appliance unattended, when it is connected to main supply.

**WARNING!**

Do not immerse the appliance in water or any liquids.

**WARNING!**

The use of accessories not included in the box is not recommended. It might be dangerous and should be avoided.

**WARNING!**

Do not touch heating element surface and there may have residual heat after use.

NOTE! This appliance can be used by children aged from 8 years and above and persons with reduced physical, sensory or mental capabilities or lack of experience and knowledge if they have been given supervision or instruction concerning use of the appliance in a safe way and understand the hazards involved.

- Do not be placed in a cabinet when in use.
- Do not use the appliance in outdoor environment.
- Do not use appliance for other than intended use.
- Do not let cord hang over the edge of table or counter or touch hot surface.
- Do not use or place the appliance on a wet or hot surface.
- Do not use the appliance if the drip tray is improperly placed in position.
- Do not use the appliance when any parts of the appliance are damaged.
- Do not use the appliance when it is not working properly.
- Do not unplug the appliance by pulling the power cord.
- Do not place the cord on a sharp edges.
- Do not attempt to open the main body or dismantle any parts from the appliance, there is no serviceable part inside.
- The appliances normally cleaned after use and not intended to be immersed in water for cleaning.
- Do not place the appliance on or near hot gas or electric burner, or in heated oven.

- Do not be moved when in use.
- Unwind and straighten the power cord before using the appliance.
- Place the appliance on a firm and steady surface.
- The appliance must be used and rested on a stable surface.
- Disconnect the appliance from mains supply outlet under the following conditions:
 - Before the water tank is filled with water
 - Before removing any parts from the appliance or refit any parts on the appliance.
 - Before cleaning or maintenance
 - When the appliance is not working correctly
 - After using the appliance
- Empty the water tank, when the appliance unused for long period
- Allow to cool before putting on or taking off parts, and before cleaning the appliance.
- Always use cold water to make coffee. Warm water or other liquids could cause damage to the coffee maker.
- If the power cord is damaged, it must be replaced by the authorised service center only.
- Use the grinder for grinding coffee bean only.
- Always disconnect the appliance from the supply if it is left unattended and before assembling, disassembling or cleaning.
- This appliance is designed for household use only.
- In order to avoid a hazard due to inadvertent resetting of the thermal cut-out, this appliance must not be supplied through an external switching device, such as a timer, or connected to a circuit that is regularly switched on and off by the utility.
- The appliance must be used at ambient temperatures of +10°C to +40°C.
- Protect the electrical connection of base unit from any possible spillage of liquids.

02 KNOW YOUR AUTOMATIC COFFEE MACHINE



Lighted indicator: Low water level/ Water tank missing



Lighted indicator: No coffee beans



Lighted indicator: Coffee grounds waste container is full
The indicator is flashing: Coffee grounds waste container is missing



Lighted indicator: Brewer is missing or installed incorrectly
The indicator is flashing: Service door is opened or installed incorrectly



Lighted indicator: Machine requires descaling
The indicator is flashing: Descaling is under process



Empty system function is running



Power ON/OFF button



Quick Clean/Milk foam button



Latte macchiato button



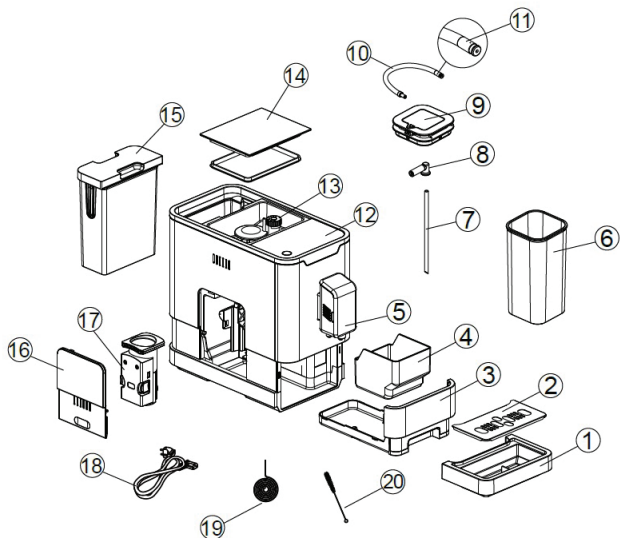
Cappuccino button



Double espresso button



Espresso button



- | | |
|-----------------------------------|---------------------------------|
| 1. External Drip Tray | 11. Milk tube connector |
| 2. Drip Tray cover | 12. Control Panel |
| 3. Internal Drip Tray | 13. Coffee Bean Container |
| 4. Coffee Grounds Waste Container | 14. Coffee Bean Container Cover |
| 5. Adjustable coffee spout | 15. Water Tank |
| 6. Milk container | 16. Service Door |
| 7. Milk tube | 17. Brewing unit |
| 8. Milk container Connector | 18. Power cord |
| 9. Milk container lid | 19. Cleaning Needle |
| 10. Milk Container tube | 20. Cleaning brush |

Technical Specifications

Rated voltage:	220-240V, 50-60Hz
Power consumption:	1235-1470W
Protection class:	Class I
Product dimensions (LxWxH):	180 x 400 x 314mm


03 BEFORE FIRST USE

3.1 Unpacking the appliance

- Remove the machine from its packaging.
- Check that all accessories are included.
- Inspect the unit for any visible damage. Do not use the machine if it appears damaged.
- Read the user manual carefully.

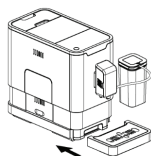
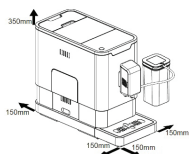
3.2 Cleaning before use

Rinse the water tank (15) in cold soapy water (do not place in dish washer), rinse thoroughly and dry with soft cloth. Wipe the exterior of the coffee machine surfaces with a damp cloth.

Use Quick Clean function  to clean inside of the coffee maker before first use. For details refer to 5.1 Quick Clean.

3.3 Coffee machine installation

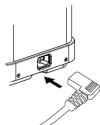
1. Choose a safe and stable surface with an easily reachable power supply. Allow some distances from the sides of machine.
2. Insert the external drip tray to the machine until it is secured.
3. Fill the water tank with water (for details refer 3.5 Filling Water Tank)



4. Fill the container with coffee beans
(for details refer to 3.6 Filling Bean Container).



5. Unwind and straighten the power cord.
Insert the plug into socket located on the back of machine, while the other end of power cord to wall socket with power voltage 220-240V.




Switch on/off the appliance by pressing the power on/off button. The appliance is equipped with auto shut-off. Depending on the mode you have selected the appliance will have different auto shut-off timing.

3.4 Mode selection

The coffee machine has three modes: Default setting, Eco mode (saves more energy) and Speed mode (helps user to make coffee faster).


	ECO Mode	Speed Mode	Default Setting
Pre-brewing*	YES	NO	YES
Auto shut off time	10mins	30mins	20mins

To select the desired mode press Power bottom  and hold for 5 seconds, you will see the coffee buttons light up.



Then, press one of the coffee option buttons to choose your preferred mode.


Double Espresso Button	Default Setting
Cappuccino Button	Speed Mode
Espresso Button	ECO Mode

If you would like to check the current setting, press and hold the Power button  for 5 seconds. The button corresponding to the active mode will light up, while the others will flash.

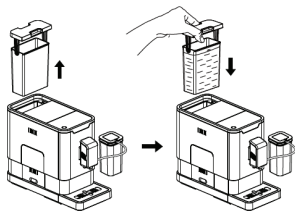
* The pre-brewing function moistens the grounded beans in the brewer with small amount of water before full extraction. This expands the coffee grounds to build up a greater pressure in brewer which help extraction of all the oils and full flavor from the grounded beans.

In accordance with EU Regulation 2023/826, the device will automatically turn OFF after 20 minutes of no operation, and its power consumption will be 0.0 W.

3.5 Filling Water Tank

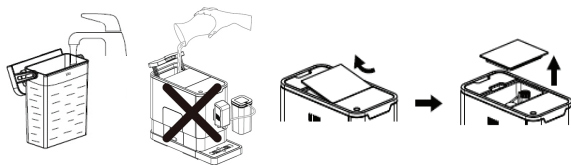
When the indicator  is flashing, the water tank has a low water level and requires to be filled up.

- Lift the water tank by using the lid as handle.




- Rinse the water tank with clean water and dry the outside with a soft cloth. Fill the tank to the Max level and place it back into the machine. Make sure it is installed properly.

NOTE: To prevent water tank overflowing, do not add water directly into the appliance.



IMPORTANT: Never fill the water tank with warm, hot, sparkling water or other liquids, this can damage the water tank and the machine.


3.6 Filling Coffee Bean Container

When the indicator  is flashing, the appliance requires to be filled with coffee beans.

- Remove the coffee bean container lid.
- Fill the coffee bean container with coffee beans.
- Install the container lid back.

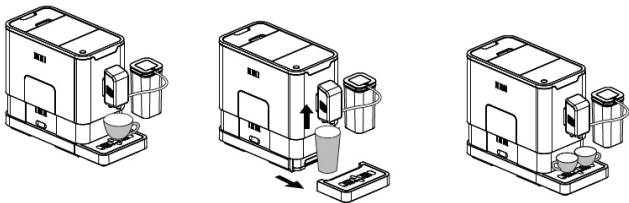
IMPORTANT: Fill the bean container only with coffee beans. Grounded coffee, instant coffee, caramelized oily or sticky coffee beans or other objects may damage the machine.

04 INSTRUCTIONS FOR USE

Before first use press Quick Clean function to clean inside of the coffee machine . The Quick Clean function automatically activates if the coffee machine has not been used for a certain period of time. This feature helps keep the internal system clean and ensures the machine is ready for the next use.

4.1 Preparing Your Coffee

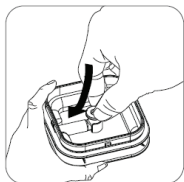
- Press the power on/off button to switch on the appliance. Ensure that the drip tray is correctly positioned under the coffee spout and that the water tank is filled.
- Once switched on, the appliance will enter standby mode.
- Place a cup under the coffee spout and adjust the spout height to fit the cup. Depending on the cup size (e.g., taller or wider cups), you may remove or reposition the drip tray as shown below.



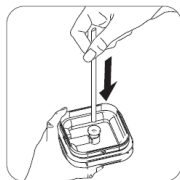
- Select your desired coffee type by pressing the Espresso or Double Espresso button.
- The selected button will illuminate, and the brewing indicator will turn on to show that your coffee is being prepared. To stop the brewing process at any time, press the same button again.
- When the appliance returns to standby mode, your coffee is ready to serve.

NOTE: Use hot water function to clean inside of the coffee maker before first use.

4.2 Assembling the automatic milk froth system



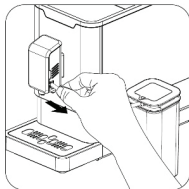
1. Place the Milk container Connector into the slot inside the Milk container lid.



2. Insert the milk tube to the Milk container Connector inside the Milk container lid.

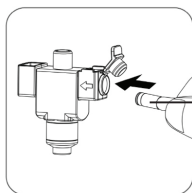


3. Insert the Milk Container tube to the Milk container Connector outside the Milk container lid.



4. Insert the Milk tube connector to the dispensing spout milk frother inlet (open the inlet cover first)





NOTE: There is a protective cover for the Milk tube connector inlet, just take it off when you need to insert the milk tube connector.



Protective cover

4.3 Preparing Latte Macchiato or Cappuccino

Assemble the automatic milk froth system as described in 4.2
Assembling the automatic milk froth system

1. Fill the milk container with milk and close the lid. It is recommended use cold milk (at a temperature of approximately 5°C/41°F) with a minimum fat content of 3% .
2. Place a cup under the spout.
3. Press Latte Macchiato button  or Cappuccino button . The button will light up indicating a beverage preparation.
4. For Latte Macchiato, the machine will dispense milk first and then coffee. For Cappuccino, the machine will dispense coffee first and milk afterwards.
5. Preparation will stop automatically, but if you want to stop it yourself, press Latte Macchiato button  or Cappuccino button  again.
6. Once your beverage is ready, remove milk container from machine and put it in the fridge.
7. After use, follow the section Cleaning the automatic milk froth system.



WARNING!


Steam and hot milk may spray out of the spout when starting the brewing. Place the Milk tube connector around the milk container lid after use. Do not let it fall freely to prevent milk spray out caused by pressure difference.



4.4 Frothing milk

Assemble the automatic milk froth system as described in 4.2 Assembling the automatic milk froth system.

Fill the milk container with milk and close the lid. It is recommended use cold milk (at a temperature of approximately 5°C/41°F) with a minimum fat content of 3%.

1. Place a cup under the spout.
2. Fill the milk container with milk and close the lid.
3. Connect the milk froth system to the machine.
4. Press the button  twice. The button light goes on during the preparation.
5. Press the button once to stop frothing.
6. After use, follow the section 5.5 Cleaning the automatic milk froth system

NOTE: It is important to clean the automatic milk froth system after a period of non-use of maximum 30 minutes after your milk preparation, to make sure the function of automatic milk frother running well. Refer to 5.5 Cleaning the automatic milk froth system

4.5 Adjusting the quantity of your coffee

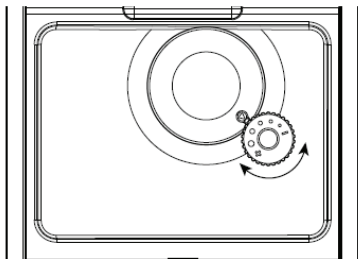
The coffee machine can memorize your desired volume of coffee. Adjusting quantity for Latte Macchiato /Cappuccino/Coffee

1. Place a cup under the spout.
2. Press Latte Macchiato /Cappuccino / Coffee button.
3. If the machine dispenses milk, press and hold the button to continue and release the button when milk froth reaches your desired volume. Milk froth stops with two beep sounds and the volume is now stored.
4. If machine dispenses coffee, touch and hold the button to continue and release the button when coffee reaches your desired volume. Coffee stops with two beep sounds and the volume is now stored.

The Latte Macchiato /Cappuccino/Coffee button is programmed: every time it's pressed, the machine will brew the desired amount.

4.6 Coffee bean grinding adjustment

You can adjust the grinder to achieve different coffee grind size by turning the adjuster knob inside the bean container. The dots on the knob indicate the selected grind size.





WARNING:

Never do the grinding adjustment when the grinder is not operating. It may damage the grinder.

05 Cleaning and maintenance

5.1 Quick Clean

It is important to use Quick clean function to clean the brewing unit and water channel regularly.

1. Put an empty cup under the spout.
2. Press the Quick Clean button , then the water will be flushing the brewing unit from the inside and then dispensing waste water from the spout.
3. It would stop automatically or you can press the  button to stop it.

IMPORTANT: Remove the milk tube connector from the dispensing spout milk frother inlet.

5.2 Cleaning Drip Tray and Coffee Grounds waste Container

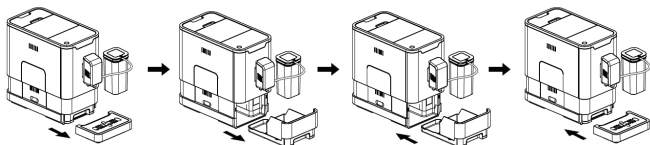



WARNING!

Before you clean the appliance, switch the appliance off and remove the plug from the socket.

It is recommended to empty and clean the drip tray every day.

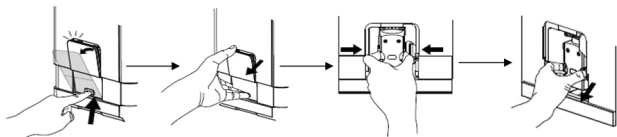
1. Pull the external drip tray out of the machine. Empty the water left in drip tray and rinse with clean water. Dry it afterwards.
2. Detach internal drip tray and coffee grounds waste container. Empty the coffee grounds waste container and rinse with water. Dry throughout.
3. Put back the coffee grounds waste container in internal drip tray.
4. Install the external drip tray at its original position.




NOTE: When the indicator  lights up, the coffee grounds container must be emptied.


5.3 Cleaning Brewing unit


1. Slightly press the bottom of Service door to open it.
2. Take out the Service door from machine.
3. Press the release buttons on Brewing unit and take the Brewing unit out. Rinse thoroughly.
4. Insert the Brewing unit back to its original position. Put the service door back.



NOTE:

When the indicator  lights up, it indicates that the Brewing unit is missing / installed improperly.

When the indicator  is flashing, it indicates that the service door is missing/ installed incorrectly.


When the indicator  is flashing, the coffee grounds container is missing.

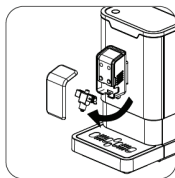
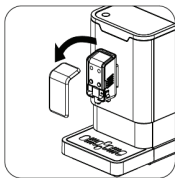
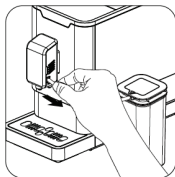
5.4 Cleaning Water Tank

1. Rinse the water tank in cold soapy water (do not place in dish washer), rinse thoroughly and dry with soft cloth.
2. Fill it with drinkable water up to the Max level. Put it back in the machine.

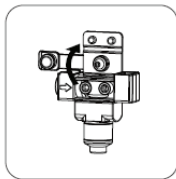
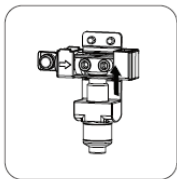
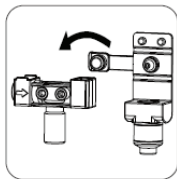
5.5 Cleaning the automatic milk froth system

NOTE: it is important to do this step after a period of non-use of maximum 30 minutes after use to make sure the function of automatic milk frother running well.

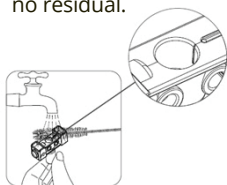
1. Place a cup under the spout.
2. Fill the milk container with water.
3. Connect the milk container to the coffee machine as describe in Preparing Latte Macchiato section.
4. Press  button twice.
5. The machine dispenses hot water and steam to the automatic milk froth system.
6. Touch the button again to stop the water.
7. Take apart the milk frother by following procedure. Clean them with water. Then insert the milk frother into slot (refer to below images).



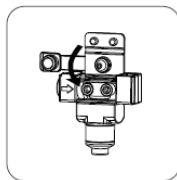
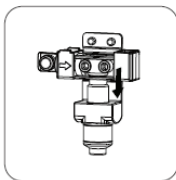
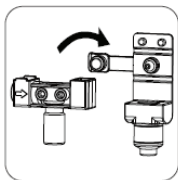
8. Take out the spout cover and then take out the milk frother.
9. Take apart the milk frother into two parts and wash with clean water.



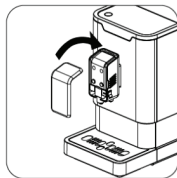
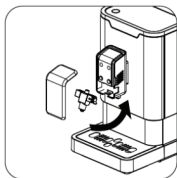
10. You can use the brush to clean above the circled area to ensure no residual.



11. Assemble the milk frother back to original.



12. Insert the milk frother back to the original position.



5.6 Cleaning the milk Container elements

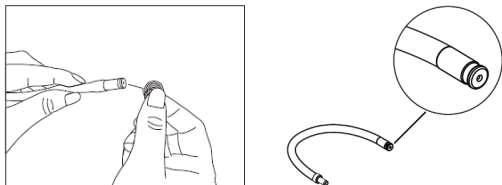
NOTE: This cleaning procedure must be carried out daily to ensure the proper functioning and hygiene of the automatic milk frother.

1. Empty and rinse the milk container with clean water. Remove the Milk container connector and the Milk tube, rinse both thoroughly with clean water, and then reassemble them onto the lid.


Ensure all connections are correctly and firmly fitted.

2. Clean both ends of the Milk Container tube with clean water. Make sure the hole in the Milk tube connector is free of residue (refer to images below).


You may use a Cleaning Needle to clean the hole if necessary.



3. Fill the milk container with clean water and reconnect it to the machine using Milk tube connector.


4. Run the Milk Frothing function by pressing the Quick Clean/Milk foam button  twice.

This draws clean water through the tube to clean the internal pathway.

5. To stop the cleaning cycle, press the Quick Clean/Milk foam button  again.







5.7 Descaling

IMPORTANT: Before descaling, remove the milk tube connector from the milk frother inlet on the spout.

When the indicator  lights up, the appliance requires descaling. For optimal performance, carry out this procedure at least once per month, or more frequently if you use hard water.

1. Fill the tank to the Max level.
2. Add one pack of cleaning agent included in the box to the water tank.




IMPORTANT: Do not use vinegar or not compatible cleaning agents to do self-cleaning of this appliance. Some agents might damage the appliance.

3. Place a large container under the coffee spout.
4. Press and hold Power ON/OFF Button  and Double Espresso button  for 5 seconds. A beep sound will be heard and the indicator  and Double Espresso button  will flash.
5. Press Double Espresso button to confirm. To cancel descaling process, press Power ON/OFF Button .
6. The indicator  will flash indicating that the appliance is undergoing the self-cleaning process.



WARNING!

Hot water is dispensed. Keep hands away from the spout.

7. When the water tank is empty, both the indicator  and Double Espresso  button will remain illuminated.
8. Rinse the water tank thoroughly then fill it with clean water up to the MAX level.
9. The indicator  will switch off once the tank is refilled. The rinsing stage will then continue automatically. Do not interrupt the machine. Wait until it finishes.
10. When the descaling process is complete, the appliance will switch off automatically.

5.8 Cleaning outside of the coffee machine

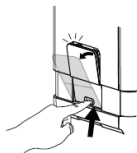
1. Disconnect the appliance from the mains supply.
2. Wipe the exterior surfaces with a damp cloth.

IMPORTANT: Do not use abrasive pads or vinegar.

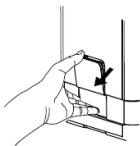
5.9 Cleaning coffee powder outlet

Over time, coffee powder may accumulate on the walls of the powder outlet.

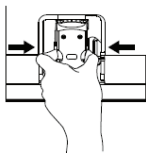
It is recommended to clean this outlet periodically to ensure that coffee powder can flow freely into the brewing unit.



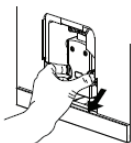
1. Slightly press the bottom of Service door to open it.



2. Take out the Service door from machine.



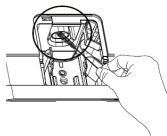
3. Press the release buttons on Brewing unit and take the Brewing unit out.



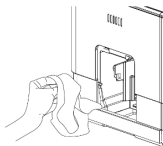
4. Take the Brewing unit out.



5. Rinse the Brewing unit under water. Let it dry completely before reassembling on the machine.



6. Use cleaning brush to clean the powder outlet and remove any coffee grounds or powder residues from the machine.



7. Use a cloth to clean inside of the machine thoroughly. Dry completely before closing the side door.

06 TROUBLESHOOTING

Problem	Possible Cause	Solution
The appliance does not work.	The appliance is not connected to the mains.	<ul style="list-style-type: none"> - Plug in and press the switch. - Check the cable and the plug.
No or delayed response in several trials of pressing on function on the panel.	<ul style="list-style-type: none"> - Appliance is under an electromagnetic interference. - Dirt on the panel. 	<ul style="list-style-type: none"> - Unplug the appliance. Restart after few minutes. - Clean the panel with the soft cloth.
The first cup of coffee is poor quality.	The grinder's first run does not supply enough coffee powder to the brewing unit.	Discard the first cup. Next cups will have good quality.
Coffee has no crema.	Coffee beans are not fresh.	Replace the beans or use another brand of fresh coffee beans.
The appliance takes long time to warm up.	Excessive limescale buildup.	Refer to 5.7 Descaling to remove limescale buildup.
The water tank is removed / the water level is very low in the water tank but  have no alert.	The area near the water tank connector is wet.	Wipe the water around the water tank connector.
Internal drip tray is filled with a lot of water.	Coffee powder is too fine, blocking water flow.	Adjust the grinder to larger dot while the grinder is running.
Coffee is delivered too slowly or a drop at a time.	Coffee powder is too fine, blocking water flow.	Adjust the grinder to larger dot while the grinder is running.

Problem	Possible Cause	Solution
<p>Lack of bean indicator flashes but there is still a lot of coffee beans inside the container. No milk foam.</p>	<p>The internal coffee powder outlet is blocked. -The automatic milk frother is dirty or not assembled, or installed correctly. -The hole of Milk tube connector is blocked by milk residues.</p>	<p>To follow the steps of section 5.9 Cleaning coffee powder outlet. -Refer to section 5.5 Cleaning the automatic milk froth system and make sure the unit is correctly assembled and installed. -Refer to section 5.6 Cleaning the Milk Container elements. Clean the connector and make sure the hole on the connector is not blocked, use Cleaning Needle to clean the hole.</p>
<p>The hole of Milk tube connector is blocked by milk residues which hardly to be cleaned.</p>	<p>The milk tube connector not be cleaned for a long time.</p>	<ol style="list-style-type: none"> 1. Soak the milk tube connector in warm water for one hour 2. Follow the 5.6 Cleaning the Milk Container elements 3. Use the frothing milk function to clean until water flows smoothly. 4. Use Cleaning Needle to clean the hole.
<p>Milk does not froth well.</p>	<p>The milk type is not suitable for frothing.</p>	<p>Different milks create different levels and qualities of foam. Semi-skimmed or full-fat cow's milk produces the best results.</p>
<p>Milk sprays onto the table.</p>	<p>Milk Container tube is installed incorrectly.</p>	<p>Ensure the Milk Container tube is properly placed and connected.</p>
<p>Descaling indicator is flashing even after the descaling process.</p>	<p>Descaling process is not completed.</p>	<p>Wait until the descaling process finishes. The machine will turn off automatically. Do not switch off the machine manually during descaling.</p>

07 PRODUCT COMPLIANCE AND DISPOSAL INFORMATION



At the end of its service life, this product may not be disposed of in the normal household waste, but rather must be disposed of at a collection point for recycling electrical and electronic devices. The materials are recyclable according to their labelling. You make an important contribution to protecting our environment by reusing, recycling or utilising old devices in other ways. Please ask the municipal administration where the appropriate disposal facility is located.

08 CONTACT ZEPTER

Home Art & Sales Services AG
Sihleggstrasse 23,
CH-8832 Wollerau,
Switzerland

Zepter International Poland Sp. z o.o.
ul. Domaniewska 37,
PL-02-672 Warsaw,
Poland

quality@zepter.com
www.zestbyzepter.com

QR code to Zepter online store



09 WARRANTY STATEMENT

Thank you for choosing a ZEST by Zepter product. We take pride in providing high-quality appliances, where a design isn't just something you look at—it's something you feel.

Warranty Coverage:

This product is covered by a 2 Year Limited Warranty from the date of original retail purchase.

During the warranty period, the manufacturer will repair or replace (at its discretion) any part of the product that is found to be defective in materials or workmanship, under normal household use and in accordance with the operating instructions.

What Is Covered:

This warranty covers defects in materials or manufacturing, electrical or mechanical malfunctions under normal usage, and the replacement or repair of faulty components at no charge.

What Is Not Covered:

Damage caused by misuse, abuse, or neglect. Failure to follow the instructions in the user manual. Normal wear and tear (e.g., scratches, discoloration, or worn-out parts). Accidental damage, fire, flood, or other external causes. Unauthorized repairs or modifications.

Conditions for Warranty Service:

A valid proof of purchase (original receipt or invoice) is required. The warranty period is not extended by repair or replacement. All servicing must be performed by an authorized service center.

How to Obtain Warranty Service:

If you experience any issues with your product, refer to the Troubleshooting section of the user manual.

If the issue persists, contact our Customer Support team:

Email: _____

Phone: _____

Website: _____

Please have your item number, serial number, and proof of purchase ready when contacting us.

10 WARRANTY CARD

Customer Information:

Name _____
Address _____
Phone Number _____
Email _____
Date of Purchase ____ / ____ / ____
Place of Purchase _____
Item Number _____
Serial Number _____
Lot Number _____

To ensure long-lasting performance and safe operation, please follow all safety precautions, usage instructions, and maintenance guidelines provided in this manual.

ZEPTEK OWNED COMPANIES

BELARUS , Minsk	ITALY , Milan	ROMANIA , Bucharest
BULGARIA , Sofia	JORDAN , Amman	RUSSIA , Moscow
CANADA , Toronto	KAZAKHSTAN , Almaty	SERBIA , Belgrade
CZECH REP. , Prague	LATVIA , Riga	SLOVAKIA , Bratislava
CROATIA , Zagreb	LITHUANIA , Vilnius	SPAIN , Madrid
EGYPT , Cairo	MOLDOVA , Chisinau	UKRAINE , Kiev
ESTONIA , Tallinn	POLAND , Warsaw	USA , North Bergen
HUNGARY , Budapest	PRINCIPALITY OF MONACO , Monte Carlo	

ZEPTEK DISTRIBUTORS

ALBANIA, Living Longer, Exclusiv Sh.p.k
ALGERIA, Newtech Algerie Division
ARMENIA, Travelon Ltd., Afina LLC
AZERBAIJAN, Royal Home Design LLC
AUSTRALIA, Dioswell PTY LTD, Zepter World Australia
AUSTRIA, Vienna, ZEBIZZCLUB GmbH
BANGLADESH, Adora BD Limited
BELGIUM, Haromed BVBA
BOSNIA AND HERZEGOVINA, Sarajevo, Banja Luka
CHINA, Shenzhen Shande Brothers Medical Biotechnology Co.Ltd
CYPRUS, Life's Quality Ltd
DENMARK, Govinda Consult APS
DOMINICAN REPUBLIC, Medicaluz
FRANCE, Paris HITEC Environment
GEORGIA, Limited Liability LLC
GERMANY, Sollingen, Sefeld MZV Deutschland GmbH
GUADALOUPE, SAS BEE'CONFORT
HOLLAND, Corrective Cosmetics Haromed BVBA
HONG KONG, Wessen Group Limited, Solutions Health Care, Gold Beauty Ltd.
ISRAEL, A.L.N. Import LTD
JAPAN, Aglex Inc.
KOSOVO, Living Longer, Exclusiv Sh.p.k
KUWAIT, Healthy Home Trading Co.
MACAU, Wessen Group Limited
MACEDONIA, Skopje, Exclusiv Sh.p.k
MAROCCO, Lilimpharm
MONGOLIA, Standlab Co Ltd
MONTENEGRO, Zepter d.o.o Podgorica, Exclusiv Sh.p.k
NEW ZEALAND, AJE Lifestyles Limited
NORWAY, Uno Vita AS Nailit A/S
PHILIPPINES, BCP Dermatological Corp
Saudi Arabia, Zepter Pandragora, Sagrama FZ-LLC
SINGAPORE, Zen'Yu Pacific Pte Ltd.
SLOVENIA, Slovenj Gradec, Status d.o.o. Metlika
SOUTH KOREA, Seoul, Angel Korea Ltd., Dooil GL Co.,LTD
SWEDEN, Galo Medical AB,
SWITZERLAND, Wollerau, Z-Elite GmbH, Life Resonance AG, Physiotherapie 011
TURKEY, Derma Medikal Kozmetik Ithalat Ihracat Ve Tic.Ltd.Şti.
UAE, Scarlette Trading Co., Zepter ME Trading LLC, Sagrama FZ-LLC
UK, Colour Ministry, UK
UZBEKISTAN, Tashkent, OOO Blayza

Home Art & Sales Services AG
Sihleggstrasse 23,
CH-8832 Wollerau,
Switzerland